



2021 Impact Report



A stylized illustration of a shopping bag with a handle, filled with various fruits like apples and oranges, rendered in shades of orange and white.

Mission Statement

The Berkeley Food Network seeks to end hunger and poor nutrition by using innovative, community-centered solutions to build a more sustainable, resilient, and equitable food system.

Values

Community
Sustainability
Collaboration
Innovation
Equity



When we founded the Berkeley Food Network in 2016, we wanted to know how many people in Berkeley and Albany were experiencing food insecurity. A review of the data showed us that 24,000 people—one in five of our neighbors—needed help getting enough food on their tables to live active and healthy lives. We made a commitment, then and there, to become an organization that could reliably provide nutritious food to anyone in our community who needed it.

We doubled down on that commitment in March 2020 when the COVID-19 shelter-in-place order was put into place. As many of you already know, we were able to triple our work in two months to serve 5,000 people a week, thanks to the generous outpouring of support from our community. And in 2021, because of our community's ongoing support, we continued to reliably provide healthy food to a growing number of people every week, turning no one away. At the end of 2021, we were feeding over **6,000 people a week**.

With that commitment came the realization that, in order to continue to do our work into the future, we would need to build a BFN that would be sustainable, agile, and flexible enough to deal with any contingency that came our way. In 2021, we hired new staff, created better and more efficient processes for our warehouse operations, and diversified our food sourcing streams.

We also realized that, to build a truly sustainable organization, we would need to deepen our commitment to our values, centering them in all the decisions we made. We continued to build out our client-centric services, seriously addressing nutrition insecurity, providing more equitable access to desired foods, and providing dignified distributions at times and places convenient to our clients. We became involved in the circular economy by purchasing more of our food locally and supporting food businesses that use sustainable practices. We moved toward full staffing, adding well-paying jobs with benefits to our community. We honored the environment by becoming an Alameda County Certified Green Business, sourcing food from four local farms using sustainable practices, and recovering 660,000 pounds of edible excess food that would otherwise go to waste, preventing 575 metric tons of greenhouse gas emissions.

You can read more about what we accomplished in 2021 and the vision we have for moving forward in this report. We want to ensure that everyone in our community has equitable and reliable access to the healthiest food, now and well into the future.

Sara Webber

Co-Founder and Executive Director

Deborah Lewis

Board Officer, Chair

Our Work In 2021

In 2021, your support ensured that the Berkeley Food Network was able to feed increasing numbers of our nutrition-insecure community members every week. We sourced more of the healthy foods that our clients find too expensive to buy, grew our food distribution partnerships, and began the work of building BFN into a healthy and sustainable organization, ready to meet the challenge of providing equitable access to healthy food to everyone in our community who needs it, no matter the circumstance. Learn more about how BFN grew our services last year and how we prepared for future growth.

Sourcing Program

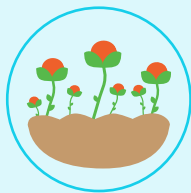
In 2021 we committed to diversifying our food sourcing, focusing on the types of healthy foods that our clients have difficulty accessing. We relied heavily on our robust Food Recovery Program and donations from local food producers for fresh and shelf-stable groceries as well as prepared ingredients that we use in our Hub Kitchen meals. We developed relationships with local farmers who use sustainable practices to ensure that we could reliably offer the fresh produce that nourishes our clients and, at the same time, support farming practices that nourish our local lands. And we sourced staple pantry, produce, and protein items inexpensively and at no cost from the Alameda County Community Food Bank.

What We Did	What We Learned	What Comes Next
<ul style="list-style-type: none"> • Sourced 1.9 million pounds of foods • Developed relationships with four local farms that use sustainable practices to consistently provide fresh, seasonal produce to our clients. • Collectively purchased hard-to-source items, such as cooking oil, seasonings, flour, and special holiday foods, with other food assistance organizations in our community. 	<ul style="list-style-type: none"> • Strong partnerships with local food producers and businesses are crucial to ensuring robust and consistent food sourcing for our programs. • We have the capacity to recover enough food for our own programs and to share with other food-assistance organizations in our community. • Many of the food assistance programs in the East Bay are excited to partner with us to source healthier, locally produced foods. 	<ul style="list-style-type: none"> • Creating a full-time Sourcing Manager position. • Growing our sustainable food purchasing practices and partnerships with local food producers and businesses. We will soon be receiving regular shipments of specialty Asian produce from ABIRC (Asian Business Institute and Resource Center) for our pantries. • Becoming a food recovery broker and sharing the bulk of that food with more partners. • Developing a collective purchasing group with other food-assistance organizations in Alameda County.



Food Recovery

Donations from grocery stores account for a large portion of the food we recover. In 2021, we recovered 185,560 pounds of food through our partnerships with 9 local grocery stores: Berkeley Bowl, Trader Joe's, Safeway, Sprouts, Target, Middle East Market, Monterey Market, Village Market, and Market Hall. Through these partnerships we received a range of healthy foods, such as produce, meat, eggs, and prepared foods. We use this food for our own food distributions and our Hub Kitchen program. We also share a portion of it with other food-assistance organizations in our community. We will continue to expand our grocery store recovery sourcing in response to Senate Bill 1383.



Sustainable Sourcing Program

During the summer of 2021, we sponsored a student intern at the UC Berkeley student farms in partnership with the Berkeley Food Institute. In return, we received produce from those farms. In this way we gained access to fresh locally and sustainably grown produce while, at the same time, helped those farms grow capacity and develop the farming skills of UCB students.





Preparation Program

Once we receive food in our warehouse, our warehouse team works diligently to prepare it for distribution. Recovered food is weighed and sorted by type and useability. It is then distributed through our pantry programs and those of our community partners. It is also transformed to create our ready-to-eat, vegetarian Hub Kitchen meals and hot meals for some of our unhoused program partners, which are prepared in a nearby rented kitchen space. Purchased and donated foods are weighed, checked into our warehouse inventory system, and properly stored. We rely heavily on our dedicated volunteers to do this work.

What We Did

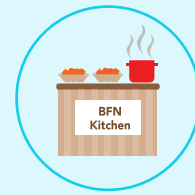
- Produced 35,875 nutritious vegetarian Hub Kitchen meals in our rented kitchen space using recovered food.
- Sorted and repacked thousands of donated eggs and thousands of pounds of recovered produce. We also repackaged bulk food such as flour, coffee, rice, and polenta for distribution through our pantry programs.
- Used nearly 5,000 hours of volunteer time to prepare food for distribution, the equivalent of 2-1/2 full-time staff.

What We Learned

- Through careful handling and storage, we can use 90% of the food we recover.
- There are a lot of talented cooks in our community and many of them are happy to volunteer in our Hub Kitchen, consistently turning recovered food into delicious, healthy meals.
- As we grew, it was important to have appropriate staffing levels and create more professional warehouse procedures in order to do our work effectively and feed more people.

What Comes Next

- Implementing Primarius, a robust inventory system designed for food banks to track where our food comes from, what we have in stock, and where it goes.
- Moving to a bigger kitchen, allowing us to bring on more volunteers to produce more Hub Kitchen meals.
- Continuing our focus on establishing proper staffing levels and improving operational procedures in our warehouse.



Hub Kitchen Program

In our rented kitchen space, ½ mile from our warehouse, our Hub Kitchen manager leverages volunteer time and expertise to produce healthy vegetarian meals using recovered food. Some of these meals are then individually packaged and frozen and distributed through our own onsite pantry, our mobile pantries, to seniors in partnership with the City of Berkeley's Aging Services Division, and to our homebound clients. We also prepare meals for our partner Dorothy Day House to be served communally at their Horizon Transitional Village.



Warehouse Preparation

In our warehouse, volunteers assist with the receipt, storage, and preparation of the foods we source for distribution. On any given day we will have recovered eggs, produce, and prepared items to manage, along with the foods we purchase. Volunteers prepare the inventory for our on-site pantry and BFN warehouse staff prepare food orders for pickup by and delivery to our food-assistance partners and for our Mobile Pantry distributions.



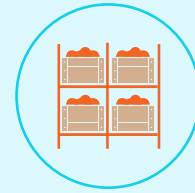


Distribution Program

In 2021, we distributed food to our nutrition-insecure community members in a number of ways, but all of them relied on our network of partners. Our model of working through partnerships with organizations that best know their clients ensured that we were able to provide access to nutritious food to everyone in our community who needs it. Based on client feedback, we offered more of the nutritious foods our clients find most unaffordable.

We distributed food through our On-site Pantry and Mobile Pantry programs, our Redistribution (RDO) Program, and our Home Delivery Program.

What We Did	What We Learned	What Comes Next
<ul style="list-style-type: none">• Increased the number of people we serve from 5,000 a week at the beginning of 2021 to 6,000+ a week by the end of 2021.• Operated 39 Mobile Pantries across Berkeley and Albany. Converted 18 of our Mobile Pantry distributions from pre-packed grocery bags to farmers market style client-choice distributions, allowing clients to choose the types and amounts of foods that work best for their households.• Added 37 new RDO partners who sourced food for their own programs through our warehouse.• Delivered groceries and frozen meals regularly and reliably to 43 homebound clients, mainly seniors.	<ul style="list-style-type: none">• Clients are less interested in the typical shelf-stable pantry foods that are inexpensive and easy for them to purchase. They need better access to more expensive healthy foods, such as high-quality protein and fresh produce.• Mobile pantries allow us to reach food to people in Berkeley and Albany who might not otherwise be able to access the foods they need but cannot afford.• Many food assistance programs in northern Alameda County are operating on tiny budgets and welcome access to the healthy foods they can source at no cost through our warehouse.	<ul style="list-style-type: none">• Expanding our Mobile Pantry program to reach more nutrition-insecure residents closer to where they live.• Surveying our clients to learn more about what foods they need and the best ways to get it to them.• Adding new RDO partners and working with all our RDO partners to increase their capacity.• Mapping client addresses to identify areas where mobile pantries could be implemented for more accessible food distribution.



Redistribution Organization Program (RDO)

Our RDO program became official in June 2021. In partnership with the Alameda County Community Food Bank (ACCFB), we were able to start offering ACCFB-sourced foods to other food-assistance organizations in Berkeley and Albany. In addition, we also provided them with recovered foods, donated foods, and collectively purchased foods. Our partners were able to shop at our warehouse or order larger amounts of food for pickup or delivery. These organizations used this food for their own pantry and prepared meal programs.



Mobile Pantry Partners

In 2021, we partnered with the Career Technical Education (CTE) programs at Berkeley High School, Berkeley Technology Academy, and Albany High School to run mobile pantries open to the public at their school sites. Berkeley Food Network provided the food and oversight and the students ran the pantries under the supervision of their faculty and staff. In this way, the students were able to serve their nutrition-insecure neighbors and, at the same time, learn how to take responsibility for serving their neighbors in a thoughtful and reliable manner. Clients of these pantries regularly expressed their gratitude and appreciation for the kind treatment they received from the students.



Volunteers



570+
Volunteers



13,000+
Volunteer hours



6 Staff
Volunteer hours
equivalent to six
full-time staff

Our work would not be possible without our dedicated volunteers. In 2021, over 570 unique volunteers worked over 13,000 cumulative hours across all our programs. These dedicated individuals worked in our kitchen, sorted through produce, drove around Berkeley picking up and dropping off food, served our clients at our on-site and mobile pantries, and much more! We are endlessly grateful for our volunteers' generosity and their dedication to our mission. Thank you!



“

A client gave me a gift during the holidays, all bundled up in fancy gift-wrapping. While it sounds like a simple gesture, it really drove home to me that the people who use our services get to know us volunteers when we come out consistently, and it's gratifying to see that we're appreciated by them for our time and efforts.

”

—Caleb H, BFN Evening Pantry Volunteer

“

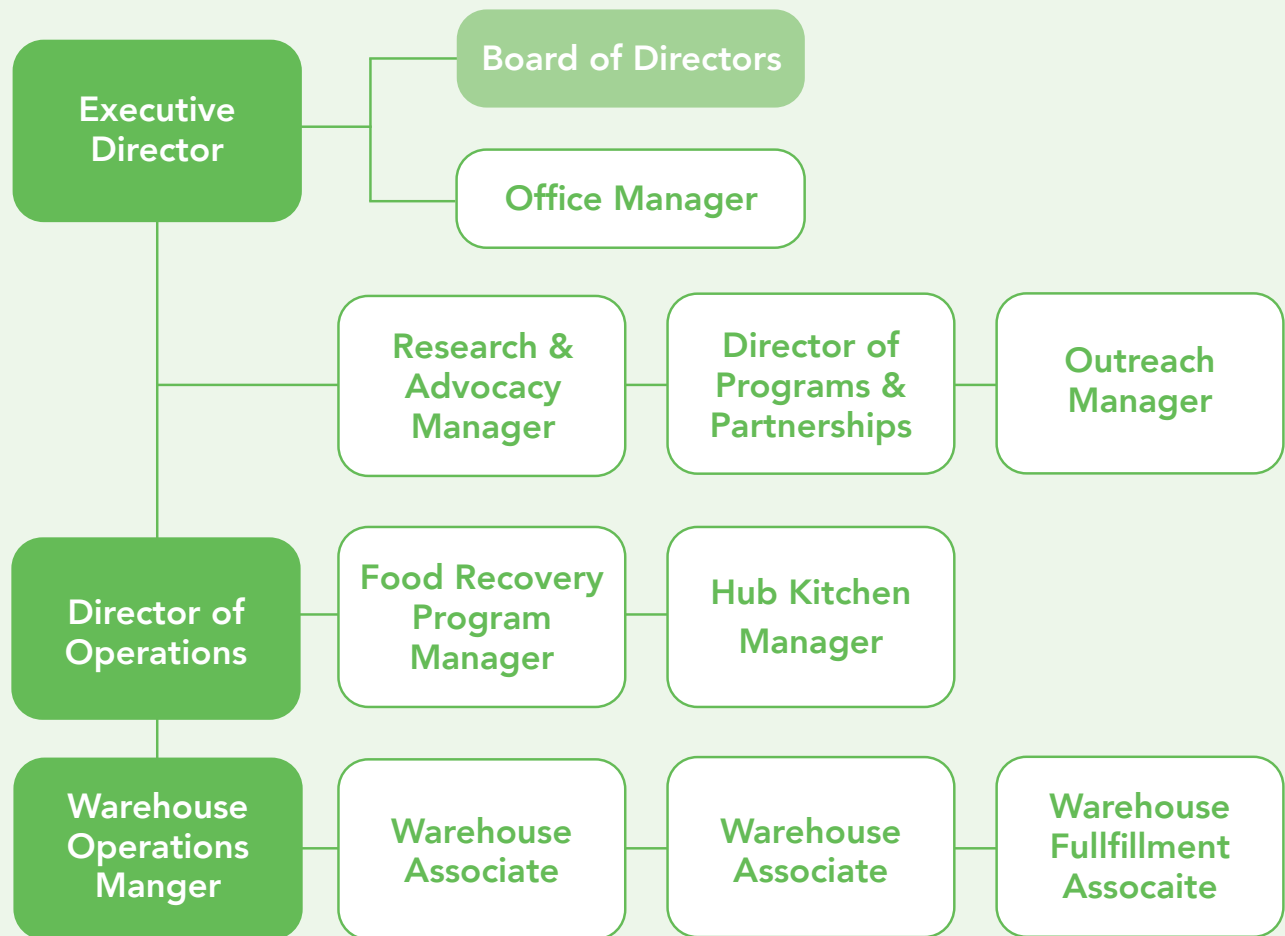
Over time as I volunteer, I find that I am deepening my own understanding about food insecurity in our community. I am always blown away by the quality, variety, and quantity of food options BFN is able to offer. We have such generous donors and SUCH an amazing, dedicated BFN staff. I always leave the warehouse feeling humbled...and tired!

”

—Annie A, BFN Volunteer

Staff

In 2021, our staff grew from 8 to 12 employees. While our staffing costs accounted for 52% of our expenses in 2021, our larger staff helped us feed more people. Being fully staffed allowed us to source more free and low-cost food, to safely and efficiently manage that food in our warehouse, to add new distribution partnerships, and then distribute that food to over 6,000 individuals every week. We could have not done this without our amazing staff.



Investing more money into staffing allows us to source and distribute more food. Our total budget in 2021 was \$1,438,000, whereas the total value of all food secured was \$3,173,000. That means that for every \$1.00 spent on our budget, we were able to secure \$2.20 worth of food.



Parris Williams

Director of Operations

Parris joined BFN in October of 2020 as our Warehouse Coordinator. She brought desperately needed warehouse experience to an organization that was growing faster than we had ever imagined we could. BFN's warehouse became calm and orderly under Parris' capable hands as she created new systems for efficiency and safety. Although professionalizing the warehouse was a monumental task, Parris not only rose to the challenge, but, in the process, ensured that BFN would thrive into the future. Today, BFN employs five full-time warehouse staff, and Parris, now our Director of Operations, oversees our Warehouse Operations Manager as well as all three Program Managers. Her exceptional skillset and experience allow her to focus simultaneously on the big picture and the nuts-and-bolts of operations, making her an indispensable asset to BFN's continued growth and service to our community.

Grace Liao

Food Recovery Program Manager

Grace has been a full time employee at BFN since August 2020. Originally from the Chicago area, she was a rising senior at Carleton College in Minnesota when she first joined BFN for a summer internship in 2019. Upon graduation, she returned to California and to BFN, initially joining staff as administrative support before taking on the role of Food Recovery Manager. Under Grace's guidance, BFN's Food Recovery Program has grown its impact many times over, creating lasting ecological change and sourcing thousands of additional tons of food for our community. We're proud to announce that in 2022, Grace has been promoted to Sourcing Program Manager, sourcing not just recovered food, but also growing our Responsible Food Sourcing Program. We know she will bring the same drive and talent she shows for recovering food to our ethical and local food sourcing initiatives.

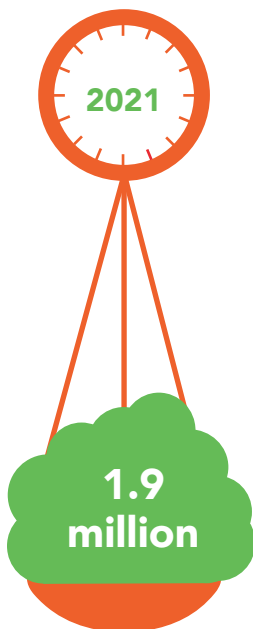
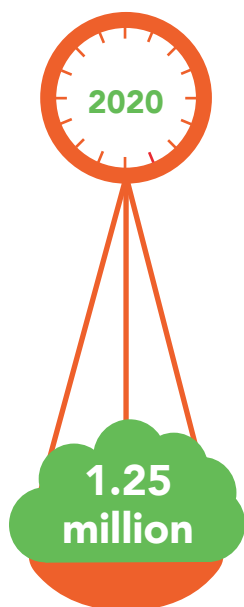


Our Impact

Number of People Served a Week



Pounds of food distributed



Value of Food Distributed



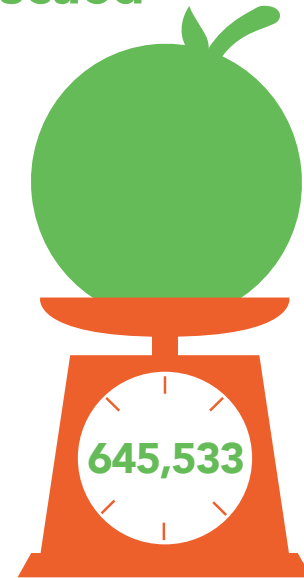
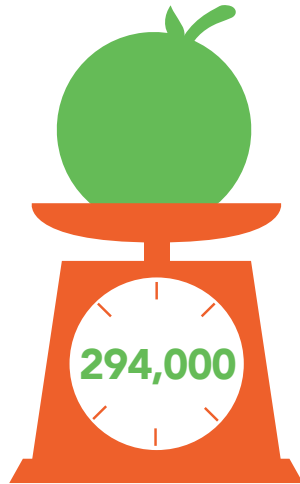
Mobile Pantry Partnerships and Distributions



2020

2021

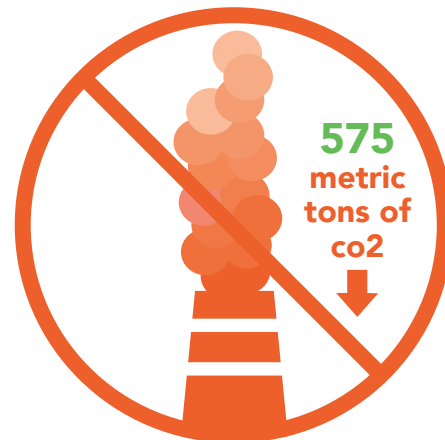
Pounds of Food Rescued



Number of Meals Supplied from Hub Kitchen Program



Greenhouse Gas Emissions Prevented



Partners



Albany High School
 Bay Area Community Services
 Berkeley Adult School
 Berkeley Arts Magnet
 Berkeley City College
 Berkeley Drop In Center
 Berkeley Youth Alternatives
 Berkeley High School
 Bridge Church
 Berkeley Technology Academy
 City of Berkeley, Aging Services
 City of Berkeley, Environmental Health
 City of Berkeley, Meals on Wheels
 City of Berkeley, Nutrition Services
 City of Berkeley, Office of Emergency Services
 City of Berkeley, Public Health
 Consider the Homeless!
 Chefs to End Hunger
 Cragmont Elementary School
 Dorothy Day House
 Downtown Streets Team
 Emerson Elementary School

Food Not Bombs, East Bay
 Foodz
 Franklin Preschool
 Gateway
 Good Shepherd Episcopal Church
 Harriet Tubman Terrace
 Help Berkeley
 Indigenous Permaculture
 John Muir Elementary School
 Kerry's Kids
 King Child Development Center
 LIFE Elder Care
 Longfellow Middle School
 Lutheran Church of the Cross
 Malcolm X Elementary school
 McGee Avenue Baptist Church
 MLK Jr Middle School
 Multicultural Institute
 North Berkeley Senior Center
 Oxford Elementary School
 POOR Magazine
 Redwood Gardens
 Rosa Parks Elementary School

Ruth Acty Elementary School
 Satellite Affordable Housing Associates (6 sites)
 Self-Help Hunger Program
 Seneca Center
 Seva Kitchen
 South Berkeley Mutual Aid
 South Berkeley Senior Center
 Suitcase Clinic
 Sylvia Mendez Elementary School
 The Bread Project
 Thousand Oaks Elementary School
 UC Berkeley Food Pantry, Basic Needs Center
 UC Village - The Bear Pantry
 United for Health
 Unity Within the Communities
 Urban Missions
 Washington Elementary School
 Where Do We Go Berkeley?
 Willard Middle School
 YMCA Head Start (3 sites)

“

We began working with the Berkeley Food Network in March of 2021 and have donated about 44,000 lbs of produce since then. We love working with BFN. They have great relationships with their clients. They are responsible and efficient.

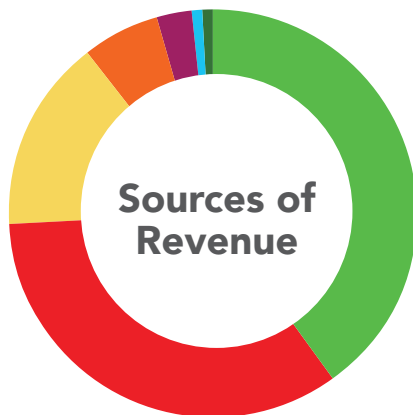
”

–Carolyn Lasar, Food Recovery Coordinator at the SF Market

In-Kind Donors

Berkeley Bowl	Food Matters Again	Petit Pot
Bread SRSly	Fra'Mani	Prime Roots
City of Berkeley	Ed Hemmat	Real Good Fish
CJ Distribution	Highwire Coffee	Ritual Coffee Roasters
Cloverleaf Farm	Middle East Market	SJ Distributors
Cold Ice, Inc.	Morrell's	Spero Foods
Mehrdad Dokhanchy	Obour Foods	Sun Powered Foods

Financials



40.1% Individual Contributions
34.3% Non-Government Grants
15.2% Donated Commodities
6.2% Government Revenue
2.8% Program Revenue
.8% Corporate Giving
.6% Employer Match



38.2% Food Sourcing
18.6% Management
15.1% Food Distribution
9.4% Research & Advocacy
7.9% Hub Kitchen
5.1% Fundraising
4.0% Volunteering
1.7% Misc/unclassified



36% No-cost from ACCFB
33% Recovered Food
29% Purchased from ACCFB and other vendors
1% Donated Food

Account Type	12/31/21	12/31/20	% Change
Cash	\$ 615,699.3	\$602,120.72	2.3%
Fixed Assets	\$ 229,797.72	\$177,135.65	29.7%
Net Income	\$44,923.5	\$552,657.24	-92.0%
Grants Receivable	\$599,905.48	\$614,187.99	-2.4%
Public Support	\$842,248.24	\$696,261.18	20.9%
Accounts Receivable	\$5,400	\$0	100.0%
Loans	\$0	\$0	0%

Donors

2021 Foundation Support-Non gov't

A&P Lesbian Fund of Horizons Foundation
Alameda County Community Food Bank
Altamont EAB
Bay Area News Group Share the Spirit
Bayer Fund
Crescent Porter Hale Foundation
Kaiser East Bay Benefits Program
Oakland-Berkeley Association of Realtors
Sunlight Giving Foundation

2021 Government Support

CalRecycle
State of California COVID Relief
StopWaste

Business and Corporate Donors

Amazon Smile
Deacon Construction
G&C Auto Body, Inc.
LaunchDarkly
North Berkeley Wealth Management

Perforce Foundation
Prins Chiropractic
Star Grocery

Recovered Foods Donors

Acme Bread
Agni
Benchmark Pizza
Berkeley Animal Care Services
Berkeley Bowl Main
Berkeley Bowl West
Berkeley Humane Society
Berkeley Mutual Aid Gleaners
Blue Apron
Bread SRSly
Cheeseboard Collective
Clif Bar
Cloverleaf Farm
Cost Less Inventory Services
Daily Bowl
Daily Bread
Double Rainbow Ice Cream
Earl's Organic Produce
Ecology Center
Edible Schoolyard
Emeryville 4H
Firebrand Artisan Breads
Flik Cafe (at Bayer Campus)
Food Matters Again
Fournée Bakery
Fra'Mani Handcrafted Foods
Frog Hollow Farm
G & C Auto Body
Good Eggs
Green Gulch Farm

Highwire Coffee Roasters
Imperfect Produce
Kensington Farmers Market
La Crepe a Moi
La Farine — Boulangerie Patisserie
Market Hall
Merritt College Garden
Middle East Market
Mission Community Market
Monterey Market
Morell's Bread
Nippon Industries
Oakland Botanical Garden
Obour Foods
Olson Family Farms
Pak-N-Save
Passione Pizza
Peerless Coffee
Petit Pot
Pizza Matador
Prime Roots
Ralph Hawley Center (YMCA)
Rebbl
Replate
Revolution Foods
Ritual Coffee
RSV Farms
Safeway
Grand Lake Farmers Market
San Francisco Wholesale Produce Market
Semifreddi's Bakery
Sol Root Farmers Collective
Spero Foods
Sprouts
Star Meats

States Coffee x Bread
Sun Powered Foods
Sweetgreen
Target
Thistle
Town Kitchen
Trader Joe's
Triunfo Foods of California
UC Berkeley Dining Hall
UC Gill Tract Community Farm
UC Berkeley Student Farms
Urban Adamah
Urban Remedy
Village Market
Whole Foods
Zero Grocery

Employer Matching Gifts

Adobe
Agilent
Anonymous Employer
Apple
Autodesk
Blue Shield of CA
Clif Bar
Chevron
Comcast
CSAA Insurance Group
Dropbox
Durfee Foundation
F5 Networks
Franklin Templeton
Fremont Group
Genentech
Google

Instacart
Intel
Kazan-McClain Partners' Foundation
Lam Research
Microsoft
Network for Good
NortonLifeLock
Pfizer
PG&E
Price Waterhouse
S&P Global
Salesforce
SiriusXM
Strategic Economics, Inc.
T-Mobile
VISA
VMware Foundation

Religious and Community Organizations

Berkeley MLK Celebration
Berkeley Rotary Endowment
Center for Food, Faith, and Justice (at McGee Avenue Baptist Church)
National Residence Hall (NRHH), Golden Bear Chapter
St. Clement's Episcopal Church

Individuals and Family Funds

Hilla Abel and Asaf Shor
Kenny Abiko
Anthony Acosta
Richard Adam
Sally Adams
Emily Ahlvin
Ilannah and Martin Aides-Klok

Anne Alcott
Alderyn Fund
Barbara and Carlo Alesandrini
Michael and Lisa Alvarez-Cohen
Gary Amado
Adele Amodeo
Seshadri Anantharaman
Rachel Anderson and Sally McCoy
Will Applegate
William and Kathy Applegate
Rebecca Armstrong
Keira Armstrong
Amanda Arnett
Aronson Foundation
Sam Arriola and Rene Kvidahl
Doris Ash
Niraj Asthana
Carrie Avery and Jon Tigar
Heather Ball
John Balmes and Sherry Katz
Chris Bankovitch and Catherine Stefani
Walter Bankovitch
Patrick Banta
Magali Barbieri
Dottie Barnett and Bill Kaufner
Ellen Barth
Elicia Battaglia
Dick Baughn and Witta Priester
Natasha Beery and Sandy McCoy
Jon and Ina Bendich
Lisa Bereny
Steve Berger and Paula Hughmanick
Alex and Michelle Bergtraun
Alison Bernstein and Judy Appel
Eric and Jeni Bezar

Betsy Bigelow-Teller	Amanda and Edward Chan	Narsai and Venus David
Bonnie Bishop and Priscilla Camp	Kathy Chao and Danny Black	Elizabeth Davids
Russell Blackburn	Patricia and John Chapman	Flora and Aryeh Davidson
Susan Black	Paul and Helen Chapman	Robert Davis
Harvey and Fran Blatter	Jacqueline Charlesworth	Edwin Davisson and Sarah Dobkin
Tawwaba Bloch	Allan Chartrand	Claire de Chazal and Francisco Santamarina
Andy Block	Armando Chenyek and Susan Kleinstein	Penny Dedel
Nancy Boas	Leigh Chesley	Geri Degen
Dona Boatright	Judy Chess	Suzanne Delbanco and Sachu Constantine
Victoria Bonnell	Jon Choy and Jeff Duerr	Sherry and Jack Delo
Carol Bowen	Michael Choy and Shannon Moffett	Linda De Lucchi
Anne and David Boyder	Robert Choy and Jenny Tan	William and Colleen Derr
Eva Bramwell	Susan and Ronald Choy	Patricia and Ted Dienstfrey
Lauren Branfield	Miriam Ciochon	Gladys Diggs
Dona Bretherick	Betsy Cohen and Lewis Apetkar	Jean DiMaria
Anna Brock and Alexandre Makler	Diana Cohen and Bill Falik	Frances Dinkelspiel and Gary Wayne
Alex and Natalie Brody	Diana and Daniel Cohen	Gregor Dodson and Caitlin Murphy
Marit Brookkothlow and Enrico Casarosa	Jeannine Cohen	Irenka Dominguez-Pareto
Jane Brooks	Joanne Cohn	Linda Dow and James Morgenstern
Carol Brosgart and Joseph Gross	Fred and Joan Collignon	Kevin Doxzen
James Brown and Eva DeLair	Henry Cook	Ascha Drake
Neal and Agneta Brown	Elaine Cooper	Jill Dressner
Dana Buntrock	Mark Cooper	Michael and Karen Dreyfus
Robert Byram	Angela Coppola	Carol Drucker
Anne Campbell and Steve Tong	Chuck and Martha Wold Cornwall	Sheila Duignan and Mike Wilkins
Kate Campbell King and Brian King	Carol Corradi	Mikaela Dunitz and Evan Smith
John Caner and Paul Booth	Renate Crocker	Linda Early
Laurie and Marilyn Capitelli	Maria Cruz and James Collier	Birch Early
Janette Cariad	Marylee Cruz	Benjamin Eastwood
The Leo J. and Celia Carlin Fund	Kit Cullinane	Bradley Efford
Gretchen Carlson	Claudia Currie-Gleason and Ed Gleason	Nancy Eichler
Vincent Carlson	Melanie Curry and Alfonso Alvarez	Victoria Eisen and David Wampler
Allen Carr and Kristen Jensen	Howard Curtis and Shoji Kasegi	Rick Elefant and Diana Jacobs
Mirna Cervantes	Apurva Dave and Heather Mills	Kendra Ellis and Jamie Paterson
Radha Chandra		

Jared Ellis	Ellen Fullman	Sim Gurewitz
Nikki Ellman	Rob Gailey and Sara Brody	Marvin Gutkin
Diane Ely	Gwyneth and Mark Galbraith	Robin Gutkin
Laura Enriquez	Nancy Galloway and Andy Morse	Theda Haber and Kathy Khuner
Epstein/Roth Foundation	Christina Garcia	Caitlin Haberberger
Marianna Eraklis and Daniel Robbins	April Gavin	Laura Haetzel
Chris Ertel and Johanna Buurman	Dr. Maryl Gearhart	Ellie Hahn
Mandy Esteban	Danielle and Ethan Geier	Ben and Sandra Hamburg
Peter Ewell and Helga Recke	Juliet Gelfman-Randazzo	Demaris Hammond
Robert Fabry and Susan Taylor	Mark Geliebter	Bonnie Hampton
Reyna Fa-Kaji	Genesys Food Drive 2021	Lisa Hanauer
Don Falk	Irma and Scott George	Larry Hanover
Chuck Fanning and Melinda Haag	Sean Gibson	Alex Hanson
Bill Fanning	Carleton Gillenwater	Karen Harber and Maxim Schrogin
Debra Farb and Eric Sippel	Robert Gill	Danielle Hartzell
Paul and Colleen Farrell	John Gilman	Christine Hastorf
Bev and David Farrell	Nicholas Glass and Mary Jo Bauman	Ken and Christina Hecht
Michael Fein and Maria David	Harold Goehring	Robin Henke
Bruce and Madeline Feingold	Bonnie Gold and David Payne	Rebecca Herman
Theodore Feldsher and Sally McLaughlin	Steve and Susan Goldenberg	Jan Herzog
Erin Felter	Heidi Goldstein and Richard Thomason	Dena and Terrence Higgins
Doug Fielding	David Golightly	David Hills
Sara Fiore	Rob and Susie Goodin	Eileen and Ward Hinds
Robert Fitzgerald	Maggie Goodman	Lassen Hines
Betsy Foster and Sean Gallagher	Katherine Gora and Matthieu Couturier	Bill Hirsch and Betsy Crabtree
William Foster	Lynn Gordon	Patrick Hitchcock
Catherine Fox	Amy Gorman	Gary and Jennifer Hoachlander
Kathryn Frank and James Blume	Pamela and Timothy Gray	David Hodgson
Zach Franklin	David Greenbaum and Heidi Rosenfelder	Lawrence and Barbara Hohlt
Joyce Franklin	Sam Greyson	Robert Holloway and Donna Asif
Jonah Frenkel	David and Marti Grubb	Karla Holmberg
Jeremy Friedland	Amy Guiang	John and Barb Holzrichter
Mary and Stan Friedman	Onur Gungor	Laura Horn
Stephanie Friedman		Bronwen and Neil Horton
Bruce and Diane Friend		Sol Hsiang

Yute Hsu
Susan Hubl
Chris Hudson and Cindy Chang
Eric Hudson
Jane Hunter
Thomas Hutcheson and Frederique Wynberg
Patrice Ignelzi and Bruce Smith
Carmelina Ignelzi
Susie and Michael Iida
Phyllis Isaacson
Chuck and Locke Jaeger
Nate Jaffa
Madeline and Bill Jay
Sondra Jensen
Robert and Diana Jensen
Harley Jensen
Carole Joffe and Fred Block
Ted and Pam Johann
Diane Johengen
Cora Johnson-Grau
Andrew and Ann Johnson
Mary Reed Johnson
Mary Katherine Johnson
Ken Jones and Becca Ratcliffe
Obaid Kahn
Raymond Kaliski
Amy Kasameyer
Sadako and Hiroshi Kashiwagi
Patricia Kato and William Huff
Helena Katz
Joel Kaufmann and Susan Blake
Cynthia Kazdan-Leap and David Leap
Jay Kelekian
Sapna Khandwala
Jayeon Kim

Tae Kim
Woojin Kim
Janet King and Thomas Corlett
Nanette and Russell King
Jessica Kmetovic and Zachary Garibay
Nitin Kohli
John and Jane Kotowski
Brian and Ashley Kozel
Liza Kramer
Diana Krampf
Jackie Krentzman and Larry Munn
Jackie Krentzman and Larry Munn
Daniel Kroll
Thomas Kuhn
Ron Kyle and Doris Balabanian
Carol and Danton Lambson
Llyana Landes
Amy Larson and Robert Uhlaner
Deborah Launer
Katy Lee
Eric Leenson
Robin Leong
Esther Lerman
Catherine Lerza
Josh and Sara Leslie
Peter Lester
Ira Levine and Linda Frisch
Alan Levy and Diana Burden
Kris Lewett
Deb Lewis and Marty Myers
Bill Liebman
Laurence LI
Andrea Linsky
Alfonso Lobos Ruiz
Martin and Joann Lorber

Eric Love
James Lovekin
Wendy and Brian Lukas
Andy Lurie
Liza and Bobby Lutzker
Jimmy, Denise and Geena Lyons
Christine Ma and Jeremy Reiter
Pamela Maffei
Thomas Magrina and Jaime Mannon
Jonathon Mah and Ana Medrano Fernandez
Gilda Malek
Chris Mammen and Leigh Genser
Michelle and William Manning
Helen Marcus
David Marcus
William Marczak and Tiffany Blaho
Stacy Mar
Kim and Barbara Marienthal
Risha Mars
Bill Marthinsen
Chris Martin and Petronella Van Berry
Martha and Thomas Martin
Chris and Sarah Martiniak
Theodora Martinucci
Jill and Piero Martinucci
Sarah Matsumoto
Nanou and Teale Matteson
Bonnie Mattison
David and Jeanmarie Mayfield
Susi May
Emily McAfee
Laura McCrea
Susan McKay
Stephanie McKown and John Brennan
Tim McNamara

Susie Medak and Greg Murphy	Richard Nosek	Foundation
Richard Meiss and Peter Rudy	Dorty Nowak	Lisa Ricci
Luka Merker	Daniel Nube	David and Carla Riemer
Rob Merker	Daniel Null and Karen Williams-Null	Shari and Steve Rifas
Karen and Michael Meryash	Therese O'Neil	Tim Roan
Christine Meuris	Katherine Ogbum	Jane and John Robertson
Elisa and Erick Mikiten	Taeko and Renee Okamura	Jane Robertson
Phillip and Laura Miller	Leslie Okamura	Jules Roman
Joshua Milstein	Jaime Orozco and Sara Fain	Patrick Romani
Linda Minor	Eddie and Amy Orton	Irene Rosenthal
Sonia Mistry	W. Thomas Palmer	Donna Ross
Jay and Sarah Miyazaki	Luckshman Parameswaran and Karthiga Satkunanandan	Yehudit Rothman
Nancy Moffett	Anne Pardee and Steve Beckendorf	Judi Rotman
Mark Moore	Roz Parenti	Marion Rubin
Linda Kay Moore	Joe Parisi	Julie Rubio
Jim and Dana Moran	Amy Paulsen	Tanvi Sachar
Sarah Morgan	Glenda Pawsey	Elizabeth Sadewhite
Donna Moriguchi	Sarah Pendergrass	Harriet Sage
Whitney Morris and David Fry	Alex Perlof	Leslie Sakai
Fred Morse	Jessica Pers and Bob Stein	Janelle Salah
CatherineRose Mountain	Nick Peterson	Martha Salzman
Dennis Mulqueeney and Patricia Rossi	Sara Pierre	Suzanne Samson
Roberta Nakamura	Andy Pollack and Debbie Jordan	Joel Sanders and Carol Bieri
Elania Nanopoulos	Oona Price	Drucilla Saren
Laurie Nash	Richard Quint	Beth Sawi
Sheryl Negrin	Karina Racz	Mark Schar
Sarah Nelson	Leslie Radin and Nic Leo	Scott Scheffler and Marian Wolfe
Liam Newell	Andrea Ramiza	Holly Scheider
Jennifer Nickel and David Blaschke	Nancy Redekop	Jacqueline Schindler
Erica Nietfeld	David Rees	Jackie Schmidt-Posner and Barry Posner
Janet Noe	Edna and James Reiter	Alexander Braun Schoenfeld
John and Mary Lee Noonan	Becky Reith	Madeleine Scott
Tom Nordenholz and Kristin Kelly	Renaudin	Ira and Carol Serkes
David Noriega	Leslie Retallick	Randall Serrurier
Monica Norton	The Cleaves and Mae Rhea	David Shames

Pat and Merrill Shanks	Nancy Thomas and Chris McLean	Vita Wells
Leah Shellada	Susan Thompson	Jonathan Wexler
Alex Shusterman	Elizabeth and Jim Thomsen	Bob and Lisa Whalen
Andrew Sigal	Garret Thunen	Brad Whitaker and Maureen Sullivan
Samuel Silberstein	Megan and Marcus Thygeson	Dana Whitaker
Randi Silverman and Alan Tafapolsky	John and Mary Tibbetts	Barbara-Sue and Lynn White
Amrita Singhal and Michael Tubach	Sharon Tiller and Lowell Bergman	Colleen Whitney and David Smith
Elly Skarakis	Carter Tomassi	Noah Wiener
Skoble-Schiller Family	Margie Tostado	Gregory Wikler and Deborah Tellier
Lucy and Tim Smallsreed	Kenneth Train	Pamela Wilder
Corless Smith	Elsa Tranter	Karolyn Wilhelmsen
Margaret Smith	Michael and Shirley Traynor	Roger and Nancy Williams
Anne and Jay Smith	Henry Trevor and Elizabeth Werter	Irit and Josh Winston
Ann Smulka and Rob Blackburn	Laura Truffaut	Marjorie Winter
Mark Sopp	Alison Tucher and Charles Dyke	Steve Wolan
Bruce Spath	Unkown name	Theresa Wong
Ruth and Scott Spear	Nikki Van Ausdall	Angie Won
Sriram Srinivasan	Catherine Varnau	Kathy Yang
Traci Stanley	Matteo Visconti di Oleggio	Yiaway Yeh
Diana Staring and Larry Hobel	Kathryn and Robert Vizas	Mary York
Jenifer Steele and Arthur Ogus	Amanda von Moos	Kara Yount
Sally Stevens	Gail Wagner	Jaz Zaitlin and Mark Nienberg
Simone Stickler	Joan Wallstein	Andrea Zeppa
Larry and Elizabeth Strain	Washburn Charitable Fund	Ellen and Irving Zucker
Christina Strong	Elisabeth Watson and Nigel Blair-Johns	
Judi Sui	Douglas Watts	
Joann Sullivan	Sara Webber and Leif Brown	
Tomiye Sumner	Annette Wegscheider	
Peter and Pat Sussman	Gary Weimberg	
Eve Sweetser	Joanna Weinberg and David Levine	
Janet Tam and Kit Ratcliff	Kristin Weinberger	
Deborah Tatto	Carolyn Weinberger	
Leslie Teicholz and Leif Haase	Brian Weiner and Andrea Mock	
Debbie Tenenbaum	Adam Weisberg	
Alana Theriault and Chuck Desmarais	Alexander Weiss	



The relationship we've established with Berkeley Food Network has been a boon in so many ways. The most obvious being the ability to recover the volume of usable food we didn't even realize was recoverable! **Our staff is happy knowing that the food we recover is going to help those in the community that are in need**, the program raises the morale of the teams working to fill the pallets and the enthusiasm behind their efforts helps to lift spirits across the company.

In addition to the practical elements of food recovery, **our partnership with Berkeley Food Network has sparked additional conversations and new efforts to improve how we do business** and evaluate our contributions to the community. Since we started working with BFN,

- we've re-evaluated our existing solar energy systems and are looking into upgrades that will make our business more energy efficient.
- we will soon have 8 high speed charging stations (in addition to the two stations we have already) to encourage our customers to drive electric and charge while they shop.
- working with the city of Berkeley to find ways to reduce the use of plastics, by educating consumers and encouraging them to use reusable bags for produce and bulk items.

All initiatives that we'd been thinking of, but that received a big push now that we're working with BFN.

BFN's team has been amazing as well—such a dedicated hard-working group of people—we are grateful for their partnership!

—Chi Dixon,
Marketing and Communications Manager, Berkeley Bowl



Our Board

Deborah Lewis

Chair

Dona Boatright

Co-Founder and Vice-Chair

Rana Gidwani

Treasurer

Susan Choy

Secretary

Chuck Fanning

Co-Founder and Board Member

Kate Campbell King

Co-Founder and Board Member

Allen Carr

Board Member

Gilda Malek

Board Member

Mirna Cervantes

Board Member

Patrice Ignelzi

Board Member

Bob Whalen

Board Member

This list reflects board membership for fiscal year ending December 31, 2021.



Mailing Address
1569 Solano Ave, #243
Berkeley, CA 94707

Warehouse Address
1925 Ninth Street
Berkeley, CA 94710

berkeleyfoodnetwork.org

“

I admire everything about your organization and can say you are truly original with the way you get things done. The volunteers are always exceptional people who genuinely care. The food that you provide is incredible. I can't tell you how wonderful it is to have high quality groceries and fresh produce. During rain or shine, you are always there. It's more reassuring than you can imagine to have help like this available. I want to thank you so much for helping me and my family through hard times. You've been there for us.

”

—Anonymous Client